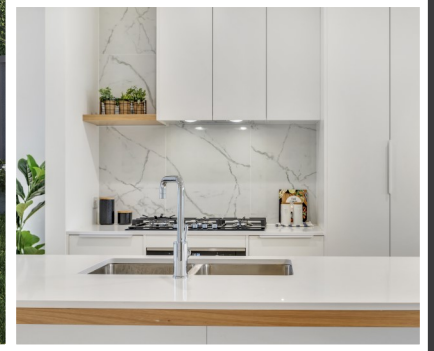




# Floriedale

frontage

15.0 m



Custom Home Builder   House and Land Package   Development   Project Management



# FORTUNE

BUILDING GROUP

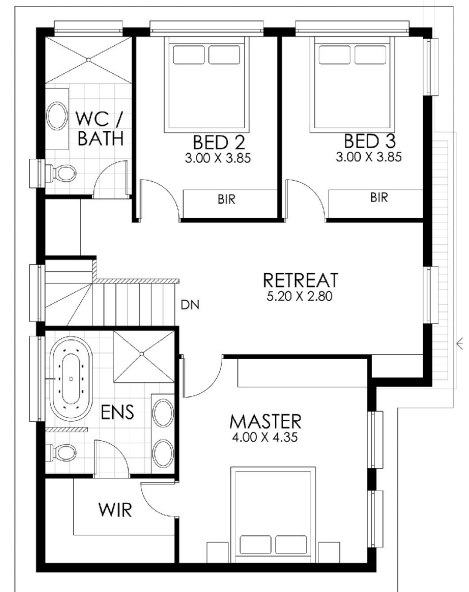
Phone: 08 8337 5555

Mobile: 0410 005 551

Address: 378 Payneham Road, Payneham, SA 5070

Website: [www.fortuneliving.com.au](http://www.fortuneliving.com.au)

Email: [info@fortuneliving.com.au](mailto:info@fortuneliving.com.au)



LOWER

UPPER

# Floreidale

frontage 15.0 m

<b>Frontage</b>	<b>15.0 m</b>
<b>Level</b>	<b>Double storey</b>
4 Bedroom	3 Bath/Ensuite
3 Toilet	2 Garage
Balcony	Sqms
Porch	8.44 Sqms
Garage	36.20 Sqms
Alfresco	14.73 Sqms
Lower living	124.17 Sqms
Upper living	92.42 Sqms
<b>Total building area</b>	<b>275.96 Sqms</b>

## Fortune Feature

- Master bedroom with walk-in robe and ensuite
- Spacious bedrooms with built-in robes
- 2.7m high ceilings
- 2340mm high internal doors
- LED down lights
- Light-filled open plan living/meal area
- Ducted reverse cycle air-conditioning
- 20mm stone benchtop
- Stainless kitchen appliances package
- All bathroom with floor-to-ceiling tiles
- 26L Instantaneous gas hot water system
- Spacious living room with 2400mm sliding doors to alfresco entertaining
- Tiled front porch and alfresco
- Garage with remote controlled automatic panel lift door
- Fly screens to all window openings
- Low maintenance garden
- Stormwater and rainwater tank
- NBN provision
- 25-year structural guarantee
- 3-month maintenance period

Phone: 08 8337 5555

Mobile: 0410 005 551

Address: 378 Payneham Road, Payneham, SA 5070

Website: [www.fortuneliving.com.au](http://www.fortuneliving.com.au)

Email: [info@fortuneliving.com.au](mailto:info@fortuneliving.com.au)